

# Image-Vet FleXX™

FleXXibility to take dental radiographs anytime...anywhere!



## Portable Intraoral Dental X-Ray System

ImageWorks Veterinary presents the latest generation in the series of Image-Vet™ X-Rays. Featuring complete portability, the Image-Vet FleXX™ sets the standard for veterinary dental radiography.

## Quick and Efficient

Your time is valuable. The Image-Vet FleXX™ allows a complete series of dental radiographs in 65% less time\* compared to conventional generators.

## Safe and Powerful

At 60kv/2mA, the Image-Vet FleXX™ has the power to produce high quality radiographs on even the largest patients. And it's FDA approved for handheld use.

## PRODUCT HIGHLIGHTS

- + Portable - FleXXible to use anywhere
- + Compact and light - only 4 lbs
- + Safe and easy operation with one hand
- + Take more radiographs, faster
- + No assembly, no installation
- + FDA approved for hand-held use
- + Allows radiograph production with one hand
- + No arm to drift
- + Oil-cooled Toshiba tube

# Image-Vet FleXX™

FleXXibility to take dental radiographs anytime...anywhere!

*"A dental digital radiography machine is the most profitable piece of equipment in a clinic. There are few patients that don't need dental radiographs. And I can't imagine doing dentistry without them."*

- DR. KATE KNUDSON (VETERINARY ECONOMICS - Case Studies: Make sure new equipment earns its keep)



The neck strap protects the Image-Vet FleXX™ and allows for simple and easy one-handed operation, allowing the user total FleXXibility to operate acquisition software, position the digital sensor or tend to the patient.



The Image-Vet FleXX™ requires NO installation or assembly. Its two rechargeable batteries, neck strap and back scatter shield all fit conveniently in the supplied hard-shelled transport case (not pictured).



The Image-Vet FleXX™ integrates seamlessly with EVA Vet Digital Dental Imaging Systems and can be used with other higher quality digital sensors and high speed dental films. Ask about a package deal for greater savings!

## PRODUCT SPECIFICATIONS

- High Frequency 60kV / 2mA
- Compact & Light - only 4 lbs
- Double lead shielding prevents x-ray leakage
- High capacity Lithium-ion battery (up to 500 shots per charge)
- Oil-cooled Toshiba tube
- FDA approved for hand-held use
- Generates less harmful radiation than conventional systems

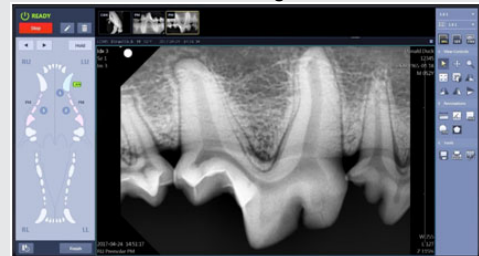
## OTHER AVAILABLE PRODUCTS



## ACCESSORIES

- Neck strap for safety and FleXXibility
- Back scatter shield for user safety
- Two rechargeable battery packs
- Battery charging station
- Hard-shelled transport case included

## ViewAll Vet Software (available with Digital Sensor)



EVA Vet Select II Digital Dental Sensor | EVA Vet Classic Digital Dental Sensor | ViewAll Vet Software | Image-Vet DC Dental X-Ray | Image-Vet FleXX Dental X-Ray

Joe@VetXray.com 1.800.346.9729 www.VetXray.com  
2325 E. Saint Charles St. | Rapid City, SD 57703